

## Panel Builder 3 DCS - P51D Instruments



### Analog Clock P51D

Displays an Analog Clock



### Pressure of Hydraulic System

Displays the Pressure of the Hydraulic System



### Flow of Oxygen

Displays the Flow of Oxygen



### Pressure of Oxygene Cylinder

Displays the Pressure of Oxygene Cylinder



### Suction Gauge P51D

Measure the negative pressure or suction in the vacuum system



### Carburator Temperature P51D

Displays the temperature in the carburator in Deg C



### Coolant Temperature P51D

Displays the temperature in the radiator in Deg C. X-Plane not supported - shows a fixed value instead.



### Engine Gauge P51D

Displays the oil and fuel pressure in psi and oil temperature in Deg C



### Manifold Pressure

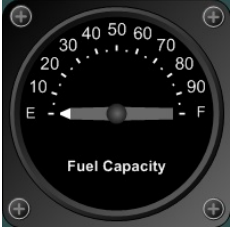
Displays the manifold pressure in inHg

## Panel Builder 3 DCS - P51D Instruments



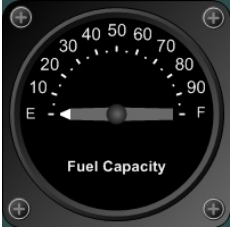
### RPM of Engine

Displays the RPM of the engine



### Display level for fuselage tank

Displays current fuel level for fuselage tank



### Display level for tank

Displays current fuel level for tank (left or right)



### Remote Indicator Compass P51D

Displays the current magnetic and desired heading



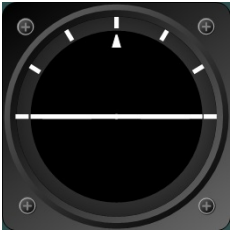
### Airspeed Indicator

Displays airspeed in miles per hour (MPH)



### Altimeter with Barometric Pressure adjustment

Displays altitude in feet



### Artificial Horizon P51D

Displays attitude of aircraft



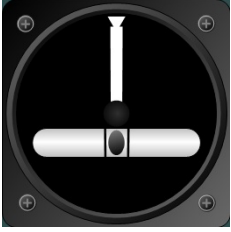
### Directional Gyro P51D

Displays aircraft heading



### Acceleration G Units

Displays the G Force on the Airframe



**Turn Rate and Slip Indicator P51D**

Displays the turn rate in deg/min and if the aircraft slips (is uncoordinated).



**Vertical Speed Indicator P51**

Displays the rate at which the aircraft climbs or descends in feet/minute