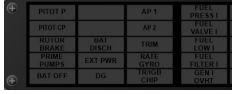

Annunciator Panel (partially working only)



Displays various system information



Chronometer

Displays Local & Zulu Time and provides a timer.



Clock Analog

Displays Local Time in Clock Dial format.



Mast Moment Indicator

Displays mast moment (X-Plane BK117 Add-On by ND only!)

Radio ADF



Sets the frequencies of the ADF Radio

Radio Com/Nav King Style (configurable)



Sets the frequencies of the Com and Nav Radio

Transponder



Sets the Transponder



Battery Amps

Displays the amps/load of the batteries



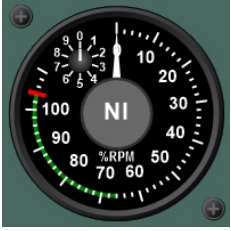
Bus Volts

Displays the volts of the 2 DC buses



Rpm for the Gas Generator (B2 Version)

Displays the Gas Generator Rpm for the configured Engine



Rpm for the Gas Generator (C1 Version)

Displays the Gas Generator Rpm for the configured Engine



Oil Temp & Press

Displays the Oil Temperature (Deg C) and Pressure (BAR) for the configured engine



Rpm for Turbines and Rotor

Displays the Turbines and Rotor Rpm



Torque of turbines

Displays the torque of the engines



Transmission Oil Pressure

Displays the Oil Pressures in Bar



Transmission Oil Temperature

Displays the Transmission Oil Temperature in Deg C



Turbine Out Temperature (B2 Version)

Displays the turbine out temperature for the configured engine



Turbine Out Temperature (C1 Version)

Displays the turbine out temperature for the configured engine



Fuel Tank Quantity

Displays the fuel qty for the main and supply tanks



DME Collins

Displays the speed, Distance and time to the tuned NAV1 or NAV2 Station



Horizontal Situation Indicator

Displays the current heading with bug for autopilot and Course/Glideslope Information for VOR/GPS



RMI Collins

Displays the current heading and the direction of the tuned VOR1/ADF and VOR2/ADF (Left Right Button)



Airspeed Indicator

Displays the airspeed in knots



Altimeter with Barometric Pressure adjustment

Displays altitude in feet



Artificial Horizon (backup)

Displays attitude of aircraft



Artificial Horizon

Displays attitude of aircraft with Flight Director



Radio Altimeter

Displays the radio altitude in feet above ground



Vertical Speed Indicator

Displays the rate at which the helicopter climbs or descends in feet/minute