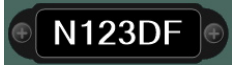


Panel Builder 3 - Instruments Analog

Aircraft Registration



Displays the aircraft registration on a label (configurable)

Aircraft Registration (Automatic)



Displays the aircraft registration on a label (automatic from flight sim)

Annunciator Round (Configurable)



Displays various system information

Annunciator Round Autopilot (Configurable)



Displays various Autopilot information

Annunciator Round Custom (Configurable)



Displays custom warning lights and data (X-Plane Only!)

Annunciator Round Engine (Configurable)



Displays various system information - configurable from engine data

Annunciator Round Fuel (Configurable)



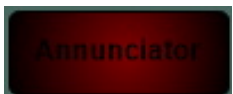
Displays various system information - configurable from fuel data

Annunciator Round Switch Status (Configurable)



Displays various system information from switch data

Annunciator Square (Configurable)



Displays various system information

Annunciator Square (Configurable)



Displays various system information

Annunciator Square Autopilot(Configurable)



Displays various Autopilot information

Annunciator Square Custom (Configurable)



Displays custom warning lights and data (X-Plane Only!)

Annunciator Square Custom 2 (Configurable)



Displays custom warning lights and data (X-Plane Only!)

Annunciator Square Engine (Configurable)



Displays various system information from engine data

Annunciator Square Engine (Configurable)



Displays various engine information

Annunciator Square Fuel (Configurable)



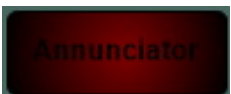
Displays various system information from fuel data

Annunciator Square Fuel (Configurable)



Displays various fuel information

Annunciator Square Switch Status (Configurable)



Displays various system information from switch data

Annunciator Square Switches(Configurable)



Displays various switch information



Cabin Altitude

Displays the cabin altitude (for pressurized aircraft)



Cabin Climb (Vertical Speed)

Displays the cabin climb rate (for pressurized aircraft)



Chronometer (X-Plane ONLY!)

Displays Local & Zulu Time & Date and provides a Stopwatch

Clock



Displays Local and Zulu Time



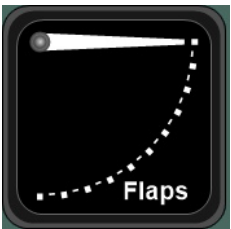
Clock Analog

Displays Local Time in Clock Dial format.



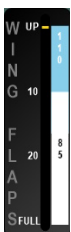
Cowl Flaps Indicator - Configurable for Engine

Shows the status of the Cowl Flaps



Flaps Indicator

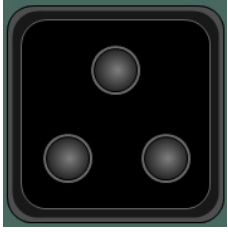
Shows the status of the Flaps



Flaps Indicator 2

Shows the position of the Wing Flaps

Panel Builder 3 - Instruments Analog



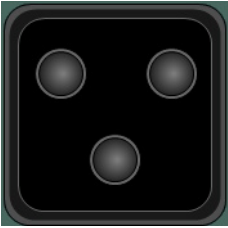
Gear Status Indicator

Displays the status of the Landing Gear



Gear Status Indicator - Cessna RG Style

Displays the status of the Landing Gear



Gear Status Indicator ("Taildragger")

Displays the status of the Landing Gear

Label Engine Data (Configurable)



Displays various engine data as a label

Label Fuel Data (Configurable)



Displays various fuel data as a label

Marker Display (ILS)



Displays whether the aircraft is over the Inner, Middle or Outer Marker.

Nav GPS Indicator Light



Shows the selected Nav or GPS for Navigation (VOR/HSI)

Outside Temperature



Displays the outside temperature in Deg F and Deg C

Outside Temperature Analog Style



Displays the outside temperature in Deg F and Deg C

Panel Builder 3 - Instruments Analog



Outside Temperature Analog Style 2

Displays the outside temperature in Deg C



Prop Sync

Shows if the props rotate in sync with each other



Spoiler Indicator (Speed Brakes)

Shows if the status of the Spoiler (Speed Brakes)



Suction

Displays Vacuum for Instruments



Trim Indicator Aileron

Shows the status of the AileronTrim



Trim Indicator Elevator

Shows the status of the Elevator Trim



Trim Indicator Elevator

Shows the status of the Elevator Trim



Trim Indicator Rudder

Shows the status of the RudderTrim

Audio Panel



Controls which radio to send/receive and listen to

Panel Builder 3 - Instruments Analog

Radio ADF



Sets the frequencies of the ADF Radio

Radio ADF Collins



Sets the frequencies of the ADF Radio

Radio Com (configurable)



Sets the frequencies of the Com Radio

Radio Com Collins (configurable)



Sets the frequencies of the Com Radio

Radio Com/Nav King Style (configurable)



Sets the frequencies of the Com and Nav Radio

Radio Label (configurable)



Displays data of the configured radio

Radio Nav (configurable)



Sets the frequencies of the Nav Radio

Radio Nav Collins (configurable)



Sets the frequencies of the Nav Radio

Transponder



Sets the Transponder

Transponder



Sets the Transponder

Transponder Collins



Sets the Transponder

APU Exhaust Gas Temperature (X-Plane Only!)



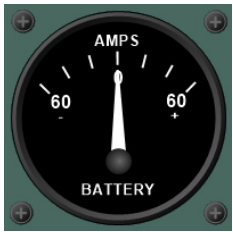
Displays the exhaust gas temperature of the APU

Battery Volts and Amps



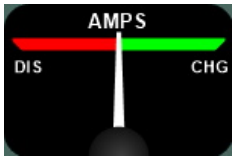
Displays the volts and amps (charge) of the battery

Battery Amps Round



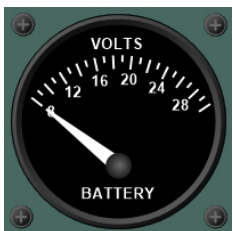
Displays the amps/load of the battery

Battery Amps Square



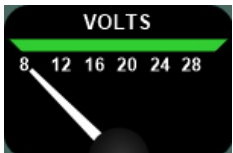
Displays the amps of the battery

Battery Volts Round



Displays the volts of the battery

Battery Volts Square



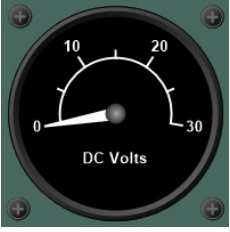
Displays the volts of the battery

Bus Load Percent



Displays the electrical load of the configured bus in percent

Panel Builder 3 - Instruments Analog



Bus Volts

Displays the volts of the configured bus



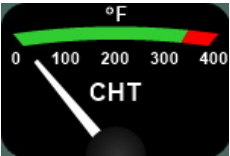
Carburetor Temperature

Displays the carburetor temperature of the configured engine



Cylinder Head Temperature

Displays the cylinder head temperature of the configured engine



Cylinder Head Temperature - Square

Displays the cylinder head temperature of the configured engine



Cylinder Head Temperature - Twin Engine

Displays the cylinder head temperature of the left and right engine



Exhaust Gas Temperature

Displays the exhaust gas temperature of the configured engine



Exhaust Gas Temperature and Manifold Pressure

Displays the exhaust gas temperature and manifold pressure of the configured engine



Exhaust Gas Temperature Square

Displays the exhaust gas temperature of the configured engine



Exhaust Gas Temperature - Twin Engine

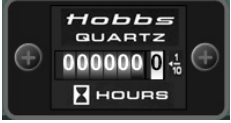
Displays the exhaust gas temperature of the left and right engine

Panel Builder 3 - Instruments Analog



Engine Pressure Ratio

Displays the engine pressure ratio of the configured turbine engine



Hobbs Meter

Displays the Engine Hours/Minutes for Engine 1



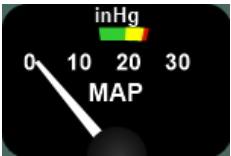
Inter Turbine Temperature

Displays the inter turbine temperature of the configured engine



Manifold Pressure

Displays the Manifold Pressure in in/hg for the configured Engine



Manifold Pressure Square

Displays the Manifold Pressure in in/hg for the configured Engine



Manifold Pressure Twin Engine

Displays the Manifold Pressure in in/hg for the left and right Engine



Low Pressure Core RPM

Displays the low pressure core RPM of the configured turbine engine in percent



High Pressure Core RPM

Displays the high pressure core RPM of the configured turbine engine in percent



Oil Temp & Press

Displays the Oil Temperature (Deg F or Deg C) and Pressure (PSI) for the configured engine

Panel Builder 3 - Instruments Analog



Oil Pressure

Displays the Oil Pressure in PSI for the configured engine



Oil Pressure Square

Displays the Oil Pressure in PSI for the configured engine



Oil Temperature

Displays the Oil Temperature for the configured engine



Oil Temperature Square

Displays the Oil Temperature for the configured engine



Rpm for Engine or Propeller (configurable)

Displays the Propeller or Engine Rpm for the configured Engine



Rpm for Engine or Propeller (low rpm version))

Displays the Propeller or Engine Rpm for the configured Engine, optimized for low rpm engines



Rpm for Engine or Propeller (configurable)

Displays the propeller or engine rpm for the left and right engine



Torque

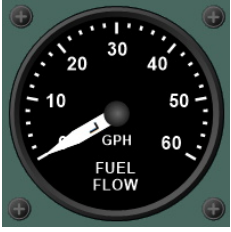
Displays the torque of the configured engine



Fuel Flow

Displays the fuel flow for the configured engine

Panel Builder 3 - Instruments Analog



Fuel Flow Twin Engine

Displays the fuel flow for the left and right engine



Fuel Pressure

Displays the Fuel Pressure in psi for the configured Engine



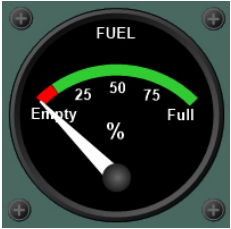
Fuel Pressure Square

Displays the Fuel Pressure in psi for the configured Engine



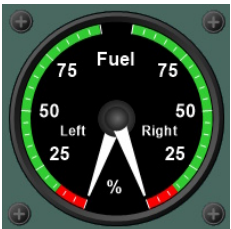
Fuel Pressure Twin Engine

Displays the fuel pressure in psi for the left and right engine



Fuel Tank Quantity (Configurable)

Displays the fuel qty for the configured fuel tank



Fuel Tank Quantity (Configurable)

Displays the fuel qty for the left and right fuel tank



Fuel Tank Quantity Square (Configurable)

Displays the fuel qty for the configured fuel tank



Instrument Cover for empty panel spots

Displays an instrument cover (configurable)



Logo

Display an image file (Logo)

Panel Builder 3 - Instruments Analog

Square Instrument Frame



Provides a frame for the square engine instruments (configurable)

Automatic Direction Finder



Displays the direction to the tuned NDB (manual ADF Card)

ADF Slaved to Gyro Compass



Displays the current heading and the direction of the tuned NDB

Altitude and Vertical Speed Selected



Displays the selected Altitude and Vertical Speed for the Autopilot

Auto Pilot GFC500



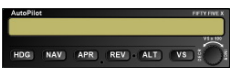
Controls the GCF500 AutoPilot

Auto Pilot Bendix King KAP140



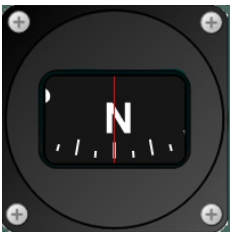
Controls the KAP140 AutoPilot

Auto Pilot STEC55



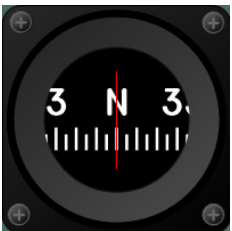
Controls the STEC55 AutoPilot

Magnetic Compass



Displays the magnetic heading of the aircraft

Magnetic Compass (Style 2)



Displays the magnetic heading of the aircraft

Panel Builder 3 - Instruments Analog

Magnetic Compass (w/out frame)



Displays the magnetic heading of the aircraft

DME



Displays the speed, Distance and time to the tuned NAV1 or NAV2 Station

Horizontal Situation Indicator



Displays the current heading with bug for autopilot and Course/Glideslope Information for VOR/GPS

Horizontal Situation Indicator



Displays the current heading with bug for autopilot and Course/Glideslope Information for VOR/GPS

Navigation Display 1



Displays ILS/VOR course and glideslope deviation with OBS knob and To/From Flag

Navigation Display 1 (Needle)



Displays ILS/VOR course and glideslope deviation with OBS knob and To/From Flag

Navigation Display 2



Displays ILS/VOR course and glideslope deviation with OBS knob and To/From Flag

Navigation Display 2 (Needle)



Displays ILS/VOR course deviation with OBS knob and To/From Flag

Navigation Display 2 (No Glideslope)



Displays ILS/VOR course deviation with OBS knob and To/From Flag

Panel Builder 3 - Instruments Analog



RMI

Displays the current heading and the direction of the tuned NDB and VOR1/2



Airspeed Indicator with speed ranges (configurable) and true airspeed scale

Displays airspeed in knots and has a scale for displaying true airspeed



Airspeed Indicator for Twin Engine Aircraft with speed ranges

Displays airspeed in knots



Altimeter with Barometric Pressure adjustment

Displays altitude in feet



GForce

Displays G-Force exerted on Aircraft



Radio Altimeter with Decision Height adjustment

Displays the radio altitude in feet above ground



Radio Altimeter with Decision Height adjustment - Low Altitudes

Displays the radio altitude in feet above ground