

Panel Builder 3 - AS350



AP Pitch Authority

Displays the Autopilot Pitch Authority



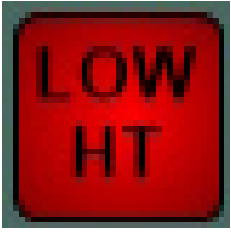
AP Roll Authority

Displays the Autopilot Roll Authority



Chronometer with stop watch

Provides a Chronometer



Low Height Warning (Configurable)

Displays Low Height Condition Warning

Master Warning (Configurable)



Displays Master Warning Condition

Warning Panel AS350



Displays various warnings and information

Radio Com (configurable)



Sets the frequencies of the Com Radio

Radio Nav (configurable)



Sets the frequencies of the Nav Radio

Transponder



Sets the Transponder



Battery Amps

Displays the amps/load of the battery



Battery Volts

Displays the volts of the battery



Annunciator Light for Bleed Valve

Lights up when Bleed Valve is open



Gas Generator RPM (N1)

Displays RPM of Gas Generator in Percent



Oil Pressure

Displays the oil pressure in bar



Oil Temperature

Displays the oil temperature in Deg C



Rotor RPM

Displays RPM of Rotor



Torque of Helicopter Engine

Displays the torque of the helicopter engine in percent



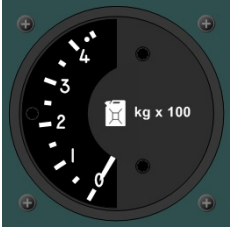
Turbine Out Temperature (TOT/T4)

Displays the Turbine Outlet Temperature in Deg C



Displays Fuel Pressure for Engine

Fuel Pressure in bar for engine



Display fill level of fuel tank

Displays current tank level in kg



DME

Displays the speed, Distance and time to the tuned NAV1 or NAV2 Station



Horizontal Situation Indicator

Displays the current heading with bug for autopilot and Course/Glideslope Information for VOR/GPS



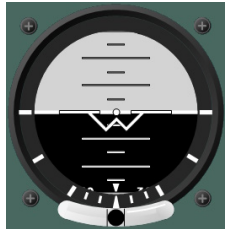
Airspeed Indicator for Helicopters

Displays airspeed in knots and mph



Altimeter with Barometric Pressure adjustment

Displays altitude in feet



Artificial Horizon

Displays attitude of aircraft and a slip indicator



Radio Altimeter with Decision Height Bug

Displays altitude in feet above ground level. Ability to set decision height with lit LED when decision height is reached.



Vertical Speed Indicator AS350

Displays the rate at which the helicopter climbs or descends in feet/minute